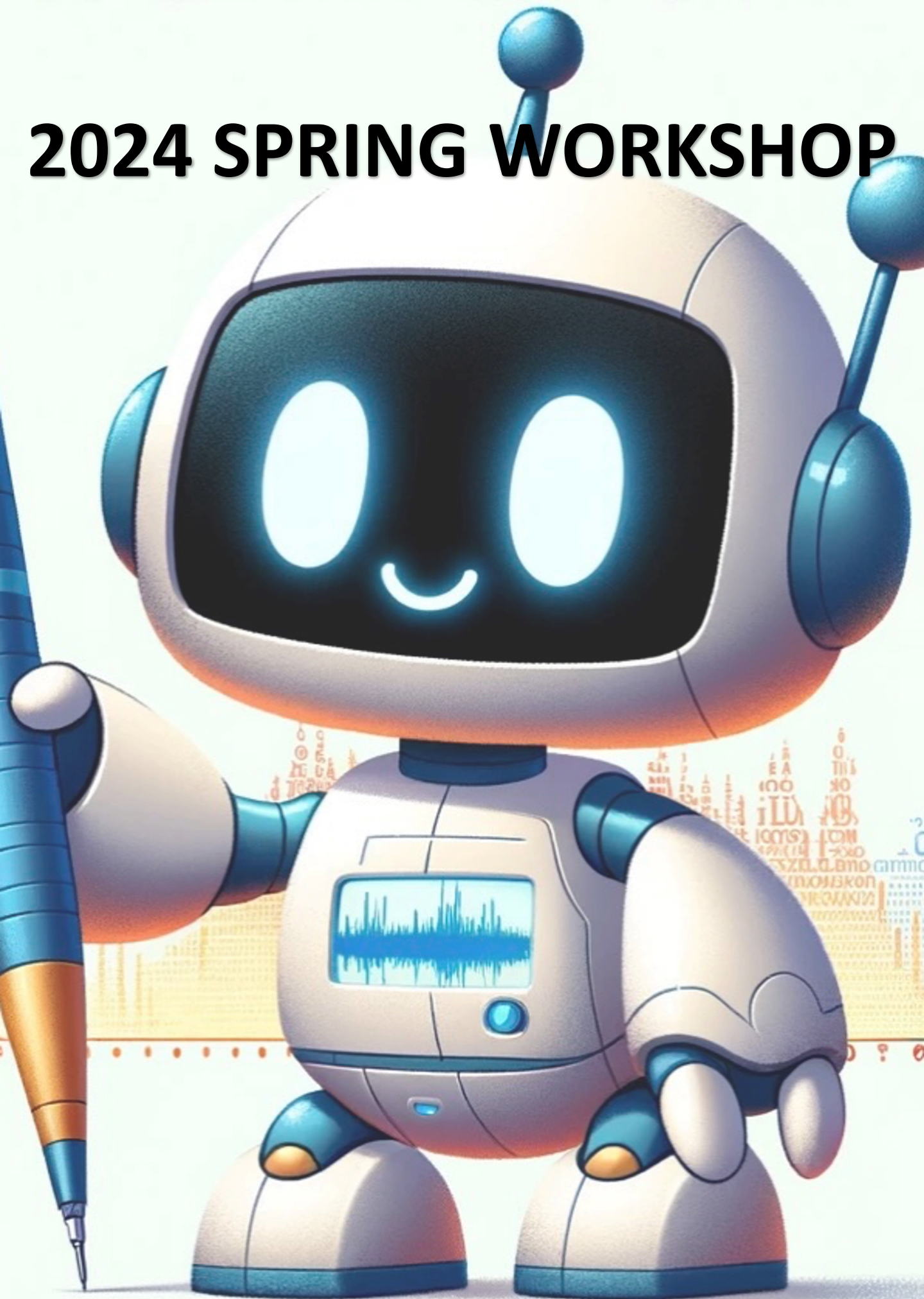


# 2024 SPRING WORKSHOP



Date: March 8, 2024, 11:00 AM Location: Yoo-Im-Soon Hall, Mediheal Earth and Environment Science Building

# Schedule

11AM - 11:30AM: 정창해

· What did I do on the Nara Tour?

11:30AM - 12PM: 최완선

· Integrated Approach for Model Optimization and Outlier Detection in Chemical Property Prediction

12PM - 12:30PM: 조근석

· How should I split my Dataset?

12:30PM - 1PM: 이나영

· Unlocking Geometry: Integrating Intuition and Logic for New Discoveries

1PM - 2PM: Lunch Break

2PM - 2:30PM: 서보성

· Deep Learning-based Estimation of Hypocentral Distance and Back Azimuth for Earthquake Location

2:30PM - 3PM: 한종원

· Comprehensive Earthquake Parameter Determination using the AI Techniques: Case Study on the Southeastern Korean Peninsula

3PM - 3:30PM: 정재헌

· Seismic waveform synthesis with diffusion model

3:30PM - 4PM: 하정운

· What is PINN?

4PM - 4:30PM: 차태훈

· Pre-trained Language Models Return Distinguishable Probability Distributions to Unfaithfully Hallucinated Texts

4:30PM - 5PM: 김한영

· A.I. on Finance

SCAN ME!



A I M L @ K

# AIML@K

# X

# Seismology Lab

# 2024 Spring Workshop

Mar 8th(Fri), 2024, 11AM

Yoo-Im-Soon Hall,

Mediheal Earth and  
Environment Science Building

